

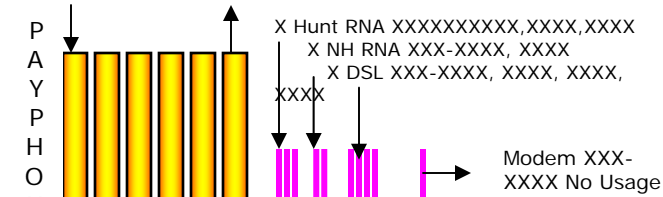
**KEY**

- = Flat Business Line \$XX.XXeA
- = ISDN BRI (2B+D) \$XX.XXeA
- = ISDN PRI (23B+D) \$XXX.XXeA
- = ISDN CO-LO \$XXX.XXeA
- = LD Voice Trunk Groups
- = DSX Cross Connect
- = OC12

X.IPSD.XXXXX / XXXXX / XXXXX / TGP XXX RTE XXX RTN  
XXX-XXX-XXXX (XX Channels)  
X.IPSD.XXXXX / XXXXX / XXXXX / XXXXX / XXXXX TGP XXX  
RTI XXX RTN XXX XXX-XXXX (XXX Channels) X WAY  
\$XXX.XX Access + \$XX.XX FCC = \$XXX.XX/circuit +  
\$X.XX/B Channel DID XXX XXX-XXXX-XXXX XXX XXX-

XXXXX TXXX  
RILTOHCSKXX/SPDAOHAVKAC

**XXXX Princeton**  
**Glendale Rd.**  
**Crescentville CO**  
XXX OCXX RILTOHCS



**CinBell Acct**  
XXX XXX-XXXX XXXX XXM  
Fxn XX/XX

**CinBell LD**  
**Acct XXXXXXX**

**CinBell Acct**  
XXX XXX-XXXX

**Broadwing**  
**Acct XXXXXXX**

**A Location**  
**Cincinnati, OH XXXXX**  
XXX OCXX SPDAOHAVKAC

**Cincinnati Bell**  
**Account XXX XXX-XXXX XXX XXM Exp**  
XX/XX

**GUARD OFFICE**

X.IPSD.XXXXX / XXXXX / XXXXX / XXXXX / XXXXX /  
XXXXX / XXXXX / XXXXX / XXXXX / XXXXX / XXXXX /  
XXXXX / XXXXX / XXXXX / XXXXX / XXXXX / XXXXX /  
XXXXX / Special Co-lo Arrangement W X<sup>th</sup>  
RTI XXX TGP XXX X WAY-DID Channels  
XX PRI Circuits @ \$XXX.XX Facility + \$XX.XX FCC =  
\$XXX.XX x XX = \$X,XXX.XX/mo Facility Only XXX B  
channels @ \$X.XX ea = \$X,XXX.XX/mo B Channels CO-  
LO Arrangement \$XXX.XX/circuit x X

X.LOXJ.XXXXXX XMb  
Ethernet LAN Port XM  
FUSE Internet \$XXX  
BTN XXX DXX-XXXX

X.IPSD.XXXXX / XXXXX / XXXXX / XXXXX /  
XXXXX / XXXXX / XXXXX RTI XXX TGP XXX X  
WAY DID Channels (XXX) \$XXX.XX Access +  
\$XX.XX FCC + \$XXX.XX Special Assembly to  
Crescentville CO = \$XXX.XX/circuit + \$X.XX/B  
Channel BTN XXX XXX-XXXX Contract XXM Exp  
X/XX DID XXX XXX-XXXX

XXXXX TXXX  
CNCNOHWSWDL  
RILTOHCSKXX  
\$XXXX.XX/mo CinBell  
Acct XXX PXX-XXXX XXX

TGX XX Outbound Inter & Intra \$X.XXX  
Ave CPM X,XXX,XXX Ave Min/Mo  
TGXX Outbound Inter & Intra \$X.XXX  
Ave CPM XXX,XXX Ave Min/Mo

**XXX W X<sup>th</sup>**  
**Central Office CO-LO**  
**X<sup>th</sup> Floor connected by**  
XXX OCXX CNCNOHWS  
CNCNOHWSWDL  
\$XXXX/mo XXM Exp XX/XX  
BTN XXX PXX-XXXX XXX

**CinBell Acct**  
XXX XXX-XXXX

X.LMXJ.XXXXXX XXXMB Ethernet  
LAN Adtl Port \$XXX.XX  
X.LMXJ.XXXXXX XXXMb LAN Pipe  
\$XXXX+\$XXXX.XX BTNXXDX-

XXX XXX-XXXX and XXXX  
Ring No Answer No Usage

X ISDN BRI Circuits (XB+D)  
IBSD.XXXX/XXXXXXXXXX/XXXX  
IBSD.XXXX/XXXXXXXXXX/XXXX  
IBSD.XXXX/XXXXXXXXXX/XXXX  
IBSD.XXXX/XXXXXXXXXX/XXXX  
IBSD.XXXX/XXXXXXXXXX/XXXX  
IBSD.XXXX/XXXXXXXXXX/XXXX  
CinBell Account XXXXXXXXXXXXX  
National PIC/LPIC MCI  
No Activity Identified

XXX OCXX  
CNCNOHWSWDL  
CNCNOHAFWXX  
\$XXXX.XX/mo  
BTN XXX PXX-  
XXXX XXX  
XXM Exp. X/XX

**XXX Plum**  
**MCI**

HFGS.XXXXXX \$X

X.BANA.XXX \$XXX.XX/mo  
CinBell Acct XXX EXX-

XXX OCXX CNCNOHAFWXX RILTOHCS \$XXXX/mo  
BTN XXX PXX-XXXX XXX XXM Exp. X/XX

**Hamilton**  
**City Comm**  
**Center**

Channelized DSX @ \$XX,XXX/mo to CO LEC CirId = HFGCXXXXXX  
Broadwing CirId = XXXXXXXX Term XXM Exp X/XX  
Slot Assignment = X-X, XX-XX = Atlanta / X-X = Newark / X-X, XX,  
XX-XX, XX = Pasadena / X-XX, XX = Morton Grove / XX-XX = Pueblo